

Dear Beef Producers,

Welcome to our annual Angus bull sale at Platte Livestock Market in Platte, SD on **Friday, Dec 13th, 2024** at 1:00 PM. What a great year it has been at Starr & Varilek Angus! In May 2024 Kade graduated from SDSU and moved home to help us full time with the operation. We celebrated Kade and Erica's wedding just this last month!

Our program at Starr & Varilek Angus is to only sell two-year-old Angus bulls. We believe it is more valuable to offer a product that has been developed properly than to sell the bulls as yearling. The development of these bulls results in a more mature sire. Our customer's cows will be serviced more efficiently; there will be less hassle conditioning the bull after the breeding season; and, finally, a more structurally sound animal is being bought. Please feel free to contact us if you have any particular questions about the development of these bulls.

The bulls being offered on this year's sale can be viewed at our place ahead of the sale. If it works that you can make it before the sale, we would encourage you to stop. The bulls will be videoed by the crew at The livestock Link. Please watch for videos on our website ([www.starrandvarilekangus.com](http://www.starrandvarilekangus.com)) or at [www.thelivestocklink.com](http://www.thelivestocklink.com). Feel free to contact Duke if you have any questions or need more information about our program and data on individual bulls. A couple notes on the sale bulls. Lots 24, 45, 46 were all used to naturally service our purebred cows this past summer. These bulls were tested per the South Dakota Animal Industry Board Requirements.

We will be utilizing CattleUSA to view/bid on the sale bulls as Platte Livestock uses CattleUSA to broadcast their weekly sales. Please contact the barn or Tess if you have questions on how to view or how to apply to bid. Many of you already have access if you have submitted to bid already at Platte Livestock or if you got set up in the past to bid. Thanks for your interest!

Duke & Tess Starr  
(605-680-3780) Duke

Tom & Bev Varilek  
(605-680-1909) Tom

Kade & Erica Starr  
(605-680-4374) Kade

### **SALE LOCATION**

Platte Livestock Market, Platte SD     **Friday, Dec. 13<sup>th</sup>, 2024     1:00 PM**

### **INCLEMENT WEATHER**

In case of bad weather, please call before you head out.

Sale Day Phone: 1-605-337-2655 (Platte Livestock Market)     Duke's cell 680-3780     Tess' cell 680-1865

### **LIABILITIES**

All persons attending this sale do so at own risk, legal or otherwise, for their own safety or the behavior or animals. The owners, auction service or sale staff assume no liability for the property loss or any accidents that may occur.

### **AUCTIONEER**

Brad Veurink     605-680-1281

### **LUNCH**

Please join us prior to the sale for a complimentary lunch in the Stockman's Café at the sale barn.

### **HERD HEALTH**

The cattle have been on a complete health program. The bulls are semen checked and come with health certificates from East River Animal Clinic, Platte SD. Lots 24, 45, and 46 were all used to service purebred cows in our own herd. These bulls were tested per South Dakota Animal Industry Board Requirements.

### **GENETIC BIRTH DEFECTS**

All bulls are free and clear of the genetic defects AM, NH, CA, DD, and M1 by test or pedigree.

### **DISCOUNT ON HAULING**

If you bring your trailer sale day or pick up your bull before Dec. 20th, you will receive a \$200 discount.

**WEBSITE** [www.starrandvarilekangus.com](http://www.starrandvarilekangus.com) Check out pictures, videos, sale info, and our operation!

### **BULL GUARANTEE**

All bulls selling are personally guaranteed for the first 60 days after you turn a bull out for the breeding season. If a problem arises, call immediately. We will provide a quality loaner bull if one is available and/or give the customer future credit less salvage value of the bull. Bulls are not guaranteed against death.

### **ASK ABOUT OUR VOLUME DISCOUNT**

## Wintering & DELIVERY

Free delivery within 250 miles. Starr & Varilek Angus will begin delivering bulls after the 1<sup>st</sup> of March. We will work with each customer on the delivery of the bulls. If a customer cannot take a bull when we start delivering, a charge of \$3.00/day will be assessed.



# CATTLE USA.com

\*watch & bid online at CATTLE USA.COM

\*must submit approval to bid through Platte Livestock Market unless already approved

\*Questions call Platte Livestock Market 1-800-337-2655 or Tess Starr 605-680-1865

## BRED HEIFER OFFERING

**37 BWF (F1) AI BRED HEIFERS.** The heifers are out of hereford cows and black angus bulls. All the heifers were AI bred on May 27<sup>th</sup> or May 28<sup>th</sup> to CAR Legendary 260. The heifers were ultra sounded on August 19<sup>th</sup>, 2024. The heifers will again be confirmed pregnant the week of the sale. (Calving March 6 or 7<sup>th</sup>) Ultrasound records will be provided.

**17 BWF (F1) BULL BRED HEIFERS.** These heifers are the bull bred heifers on the 2<sup>nd</sup> cycle. They are grouped in a two-week calving cycle approximately March 26<sup>th</sup> to April 7<sup>th</sup>. They are bred to low-birth-weight angus bulls. Ultra sounded on August 19<sup>th</sup>, 2024. The heifers will again be confirmed pregnant the week of the sale. **4 BWF (F1) BULL BRED HEIFERS.** Calving April 19<sup>th</sup>. Grouped according to ultrasound.

## SIRE REFERENC SHEET

Reference Sire	Reg. #	CED	BW	WW	YW	Milk	Doc	Sire x Maternal Grandsire	Sale Lots
S Architect 9501	19437622	+8	+0.2	+93	+153	+28	+31	SydGen Blueprint x S Whitlock 179	1-7
EXAR Stockfund 9097B	19411210	+11	+0.3	+89	+162	+26	+21	Deer Valley Growth Fund x GAR Prophet K243	8-15
VA Open Country 4153-1067	20001170	+1	+4.2	+82	+148	+21	+22	S Open Country 4153 x Connealy Thunder	16-21
S Thrive 0860	19765372	+4	+1.8	+65	+108	+33	+30	S Thrive J5515 x Sitz Performer 9029	22-25
VDAR Maga 7190	19706012	+3	+3.4	+82	+144	+16	+21	VDAR MAGA 3068 x VDAR Churchill 1063	26-34
S & V Rainmaker 1191	20169074	+5	+2.1	+82	+137	+27	+16	Basin Rainmaker 4404 x	35-37
S & V Coalition 1192	20157397	+6	+2.8	+69	+132	+29	+18	U-2 Coalition 206c x SAV Resource 1441	38-39
VA Top Game 708	19076924	+3	+3.8	+68	+120	+28	+25	Sitz Top Game 561X x S Chisum 6175	40-43
Sitz Barricade 632F	19078148	-2	+4.2	+85	+145	+17	+16	Sitz Stellar 726D x Sitz Superior 10971	44-45
Sitz Stellar 726D	18397542	+4	+0.0	+70	+127	+18	+17	Mohnen Substantial 272 x Connealy Final Product	46-48
S & V Coalition 1156	20157398	+10	+0.1	+52	+100	+34	+25	U-2 Coalition 206c x VA Justice 0105-3253	49-50
S & V Gallatin 9162	20286571	+10	+0.8	+50	+93	+31	+27	VDAR Gallatin 7586 x Musgrave 316 Colossal 137	51-53
VDAR Cedar Wind 2027	18820779	-4	+2.3	+58	+101	+23	+3	VDAR Cedar Wind 8111 x Koupal Juneau 797	54
S & V Trapper 1070	20157410	-1	+3.5	+76	+130	+22	+32	Paintrock Trapper x Sitz Rainmaker 9723	55-56
Basin Rainmaker 4404	17913751	+6	+1.4	+59	+108	+34	+23	Basin Rainmaker 2704 x Basin Payweight 107s	57-58
S & V Rainmaker 1099	20166405	+12	-0.1	+60	+108	+36	+15	Basin Rainmaker 4404 x CAR Primetracker 054	59
HARB In Style 965JH	15244182	+9	+1.1	+52	+94	+30	+21	WCC Special Design L309 x HARB Cincha 829	60
CAR Legendary 260	20554564	+13	+0.1	+74	+137	+34	+21	CAR Legendary 026 x Diamond Capitalist B011	bred heifers

Videos can be viewed @ [the livestocklink.com](http://the.livestocklink.com) or go directly to our website @ [www.starrandvarilekangus.com](http://www.starrandvarilekangus.com) and we will link you directly to the page with the videos.

# STARR & VARILEK ANGUS

## Lot 1 S & V Architect 3081

AAA # 20761751 parentage verified/HD50K  
Sire: S Architect 9501 AAA# 19437622

VDAR Cedar Wind 8111  
VDAR Cedar Wind 2027 VDAR PF Hyalite 5843

Dam: VA Nomera CW 9310 (4@97) ww ratio  
VA Nomera 0250 HARB In Style 965JH  
VA Nomera 248

BD	BW	WW Ratio	YW Ratio	Gain Ratio	Scrotal
3.17.23	77	107	102	97	37.5
CE	BW	WW	YW	Milk	Docility
+10	-0.7	+59	+111	+32	+17

## Lot 3 S & V Architect 3108

AAA # 20761749 parentage verified/HD50K  
Sire: S Architect 9501 AAA# 19437622

Vermillion Payweight J847  
Basin Payweight 107S Basin Lucy 3829

Dam: VA Tayla 9163 (4@98) ww ratio  
VA Tayla 4169 VA In Style 2085  
VA Tayla 9194

BD	BW	WW Ratio	YW Ratio	Gain Ratio	Scrotal
3.23.23	82	96	95	95	33
CE	BW	WW	YW	Milk	Docility
+12	-0.7	+56	+95	+35	+21

## Lot 2 S & V Architect 3107

AAA # commercial parentage verified/HD50K  
Sire: S Architect 9501 AAA# 19437622

MAR Innovation 251 Connealy Impression  
MAR Final Kahuna 856

Dam: VA 9139 (4@107) ww ratio  
VA 1071 Nugget of Par  
VA 6170

BD	BW	WW Ratio	YW Ratio	Gain Ratio	Scrotal
3.22.23	84	115	109	107	41.5
CE	BW	WW	YW	Milk	Docility
na	na	na	na	na	na

## Lot 4 S & V Architect 3112

AAA # 20761753 parentage verified/HK50K  
Sire: S Architect 9501 AAA# 19437622

VDAR Hero 1863 DFA Hero 6017  
GKAF Rosetta 102

Dam: VA Miss Hero 9059 (4@104) ww ratio  
VA Miss Burgess 6152 Basin Payweight 107S  
VA Miss Burgess 7005

BD	BW	WW Ratio	YW Ratio	Gain Ratio	Scrotal
3.23.23	95	120	115	112	35
CE	BW	WW	YW	Milk	Docility
+3	+2.7	+97	+158	+25	+29



Lot 2 ~ S & V Architect 3107



Lot 4 ~ S & V Architect 3112

# STARR & VARILEK ANGUS

## Lot 5 S & V Architect 3140

AAA # 20996044 parentage verified/HD50K  
Sire: S Architect 9501 AAA# 19437622

Sire: S Summit 956  
S Summit 3525 S Gloria 0467  
Dam: S & V Nicky 8023 (5@96) ww ratio  
VA Nicky 6137 Basin Payweight 107s  
VA Miss Nicky 1121

BD	BW	WW Ratio	YW Ratio	Gain Ratio	Scrotal
3.27.23	82	92	96	104	39.5
CE	BW	WW	YW	Milk	Docility
+8	+0.6	+76	+124	+27	+30

## Lot 7 S & V Architect 3167

AAA # 20761759 parentage verified/HD50K  
Sire: S Architect 9501 AAA# 19437622

Sire: Sitz Top Game 561x GDAR Game Day 449  
Sitz Pride 88T  
Dam: VA Sienna 6501 (7@117) ww ratio  
VA Emblynette 7206 TPA Freedoms Exc R223  
JD Miss Emblynette 044

BD	BW	WW Ratio	YW Ratio	Gain Ratio	Scrotal
3.31.23	95	131	119	106	39
CE	BW	WW	YW	Milk	Docility
-2	+4.0	+91	+148	+25	+28

## Lot 6 S & V Architect 3163

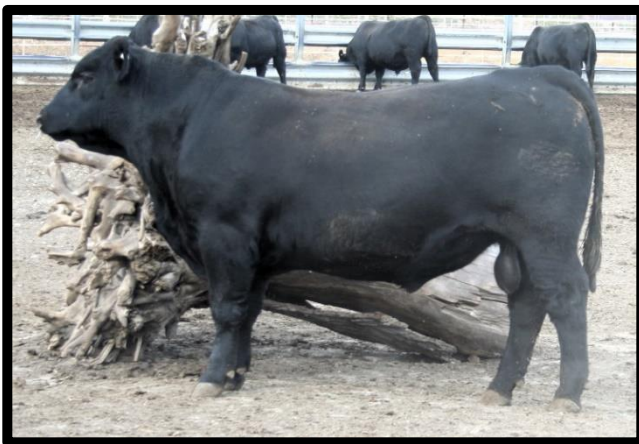
AAA # 20761755 parentage verified/HD50K  
Sire: S Architect 9501 AAA# 19437622

Sire: HA Open Country 2047  
S Open Country 4153 S Gloria 1205  
Dam: VA OC Sandy 9077 (4@109) ww ratio  
VA Sandy 6014# Basin Payweight 107s  
VA Sandy 3010

BD	BW	WW Ratio	YW Ratio	Gain Ratio	Scrotal
3.31.23	98	115	114	122	39
CE	BW	WW	YW	Milk	Docility
-1	+4.0	+88	+157	+31	+26



Lot 7 ~ S & V Architect 3167



Lot 6 ~ S & V Architect 3163

## Lot 8 S & V Stockfund 3086

AAA # 20647723 parentage verified/HD50K  
Sire: EXAR Stock Fund 9097B AAA# 19411210

Sire: HF Syndicate 213Z  
U-2 Coalition 206C U2 Erelite 109Z  
Dam: S & V Coal Ember 0174 (3@90) ww ratio  
VA Ember 4070# Sitz Upward 307R  
VA Emblynette 9228

BD	BW	WW Ratio	YW Ratio	Gain Ratio	Scrotal
3.19.22	78	94	97	104	33.5
CE	BW	WW	YW	Milk	Docility
+9	+0.5	+78	+138	+15	+19



# STARR & VARILEK ANGUS

## Lot 9 S & V Stockfund 3087

AAA # 20763135 parentage verified/HD50K  
Sire: EXAR Stock Fund 9097B AAA# 19411210

VDAR Cedar Wind 8111  
VDAR Cedar Wind 2027 VDAR PF Hyalite 5843  
Dam: VA Elba Wind 9248 (4@91) ww ratio  
VA Elba Day 1148 SAV Bismarck 5682  
VA Elba Day 4111

BD	BW	WW Ratio	YW Ratio	Gain Ratio	Scrotal
3.19.22	88	104	101	97	37.5
CE	BW	WW	YW	Milk	Docility
+11	+0.2	+63	+113	+24	+17

## Lot 11 S & V Stockfund 3095

AAA # 20763336 parentage verified/HD50K  
Sire: EXAR Stock Fund 9097B AAA# 19411210

AAR Really Windy 1205  
VDAR Really Windy 4097 VDAR Blackbird 2031  
Dam: VA Margaret 6112 (6@106) ww ratio  
VA Margaret 8217 338 Right Time 6125  
Margaret of Volga 0458

BD	BW	WW Ratio	YW Ratio	Gain Ratio	Scrotal
3.20.23	86	107	103	101	36.5
CE	BW	WW	YW	Milk	Docility
+14	-1.4	+64	+113	+22	+20

## Lot 10 S & V Stockfund 3088

AAA # 20763339 parentage verified/HK50K  
Sire: EXAR Stock Fund 9097B AAA# 19411210

VDAR Hero 1863 DFA Hero 6017  
GKAF Rosetta 102  
Dam: VA Channel 8144 (5@95) ww ratio  
VA Channel 2013 HARB In Style 965JH  
VA Channel 0085

BD	BW	WW Ratio	YW Ratio	Gain Ratio	Scrotal
3.18.23	87	95	97	104	37
CE	BW	WW	YW	Milk	Docility
+10	+1.6	+80	+139	+20	+21

## Lot 12 S & V Stockfund 3113

AAA # 20763341 parentage verified/HD50K  
Sire: EXAR Stock Fund 9097B AAA# 19411210

Vermilion Yellowstone  
Basin Yellowstone R178 Basin Camilla L868  
Dam: VA Ebony 2077 (10@102) ww ratio  
VA Ebony 7119 Ironwood New Level  
VA Ebony 9721

BD	BW	WW Ratio	YW Ratio	Gain Ratio	Scrotal
3.23.24	81	111	104	97	33
CE	BW	WW	YW	Milk	Docility
+10	-0.4	+68	+110	+24	+9



Lot 10 ~ S & V Stockfund 3088

## Lot 13 S & V Stockfund 3115

AAA # 20763105 parentage verified/HD50K  
Sire: EXAR Stock Fund 9097B AAA# 19411210

DFA Hero 6017  
VDAR Hero 1863 GKAF Rosetta 102  
Dam: S & V Elba Hero 9092 (4@102) ww ratio  
S & V Hero Elba 6188 VDAR Hero 1863  
VA Elva Day 4111

BD	BW	WW Ratio	YW Ratio	Gain Ratio	Scrotal
3.24.24	102	121	113	106	40.5
CE	BW	WW	YW	Milk	Docility
+7	+2.4	+82	+146	+19	+21

(pictured to the right)

# STARR & VARILEK ANGUS

## Lot 14 S & V Stockfund 3132

AAA # 20766406 parentage verified/HD50K  
Sire: EXAR Stock Fund 9097B AAA# 19411210

LAR Jueanu 796Y  
CAR Juneau 635 CAR Miss Heather 224  
Dam: VA Kacee 0292 (3@100) ww ratio  
VA Kacee 3136 CAR Iceberg 0108  
VA Queen 9006

BD	BW	WW Ratio	YW Ratio	Gain Ratio	Scrotal
3.25.23	70	102	100	100	36
CE	BW	WW	YW	Milk	Docility
+13	-0.1	+83	+145	+25	+18

## Lot 16 S & V Open Country 3215

AAA # 20760751 parentage verified/HD50K  
Sire: VA Open Country 4153-1067 AAA# 20001170

Vermillion Payweight J847  
Basin Payweight 107S Basin Lucy 3829  
Dam: VA Hoss Payweight 8100 (5@98) ww ratio  
VA Hoss 2061 TC Foreman 016  
Varilek Hoss 4075

BD	BW	WW Ratio	YW Ratio	Gain Ratio	Scrotal
4.06.23	101	117	113	112	41.5
CE	BW	WW	YW	Milk	Docility
-5	+5.9	+93	+168	+24	+22

## Lot 15 S & V Stockfund 3083

AAA # commercial parentage verified/HD50K  
Sire: EXAR Stock Fund 9097B AAA# 19411210

Vermillion Payweight J847  
Basin Payweight 107S Basin Lucy 3829  
Dam: VA 0058 (4@102) ww ratio  
VA 8104 VDAR Cedar Wind 2027  
VA 4081

BD	BW	WW Ratio	YW Ratio	Gain Ratio	Scrotal
3.16.23	79	109	110	114	37
CE	BW	WW	YW	Milk	Docility
na	na	na	na	na	na



Lot 15 ~ S & V Stockfund 3083



Lot 13 ~ S & V Stockfund 3115  
(information to the left)

## Lot 17 S & V Open Country 3216

AAA # 20754184 parentage verified/HK50K  
Sire: VA Open Country 4153-1067 AAA# 20001170

VDAR Cedar Wind 8111  
VDAR Cedar Wind 2027 VDAR PF Hyalite 5843  
Dam: VA Princess CC Wind 0108 (3@96) ww ratio  
VA Princess CC 5322 VA Upward 3123  
VA Princess C 7047

BD	BW	WW Ratio	YW Ratio	Gain Ratio	Scrotal
4.06.24	91	110	113	120	39
CE	BW	WW	YW	Milk	Docility
+4	+2.9	+71	+132	+25	+17

# STARR & VARILEK ANGUS



Lot 20 ~ S & V Open Country 3278

## Lot 20 S & V Open Country 3278

AAA # 20754183 parentage verified/HD50K  
Sire: VA Open Country 4153-1067 AAA# 20001170

Sire: S Summit 956  
S Summit 3525 S Gloria 0467  
Dam: VA Hoss Summit 8200 (5@105) ww ratio  
Varilek Hoss 4075 KTK Precision 181  
Varilek Hoss 294

BD	BW	WW Ratio	YW Ratio	Gain Ratio	Scrotal
4.15.24	79	104	103	104	38
CE	BW	WW	YW	Milk	Docility
+12	-0.8	+51	+94	+26	+24

## Lot 18 S & V Open Country 3225

AAA # 20762120 parentage verified/HD50K  
Sire: VA Open Country 4153-1067 AAA# 20001170

Sire: Cole Creek Black Cedar 46p  
Cole Creek Cedar Ridge IV Cole Creek Clovanada 49S  
Dam: VA Eveline 5146 (8@98) ww ratio  
VA Eveline 0360# Connealy 1i2 868 1104  
Mayers Miss Eveline M602

BD	BW	WW Ratio	YW Ratio	Gain Ratio	Scrotal
4.08.24	90	98	103	113	39
CE	BW	WW	YW	Milk	Docility
+7	+0.9	+59	+102	+25	+19

## Lot 21 S & V Open Country 3266

AAA # commercial parentage verified/HD50K  
Sire: VA Open Country 4153-1067 AAA# 20001170

Sire: WCC Special Design L309  
HARB In Style 965JH HARB Black Lady 073JH  
Dam: VA 4079 (9@107) ww ratio  
VA 1071 Nugget of Par  
VA 6170

BD	BW	WW Ratio	YW Ratio	Gain Ratio	Scrotal
4.12.24	89	97	101	111	39
CE	BW	WW	YW	Milk	Docility
na	na	na	na	na	na

## Lot 19 S & V Open Country 3243

AAA # 20754185 parentage verified/HD50K  
Sire: VA Open Country 4153-1067 AAA# 20001170

Sire: LAR Jueanu 796Y  
CAR Jueanu 635 CAR Miss Heather 224  
Dam: VA Jueanu Pride 9346 (4@99) ww ratio  
VA Rito Pride 3367 CAR Primetracker 054  
VA Rito Pride 0171

BD	BW	WW Ratio	YW Ratio	Gain Ratio	Scrotal
4.10.24	87	109	109	112	39
CE	BW	WW	YW	Milk	Docility
+3	+3.8	+75	+125	+22	+19

## Lot 22 S & V Thrive 0860 3415

AAA # 20876165 parentage verified/HK50K  
Sire: S Thrive 0860 AAA# 19765372

Sire: VDAR Hero 7072  
VDAR Sonny Boy 1194 VDAR Lass 2582  
Dam: S & V Sonny's Coco 0076 (3@100) ww ratio  
S & V Coco 6171 S Summit 3525  
S & V Coco 4096

BD	BW	WW Ratio	YW Ratio	Gain Ratio	Scrotal
5.14.24	85	104	99	95	35.5
CE	BW	WW	YW	Milk	Docility
+11	+1.4	+72	+123	+36	+36

(pictured to the right)



# STARR & VARILEK ANGUS



Lot 24 ~ S & V Thrive 3222

## Lot 24 S & V Thrive 0860 3222

AAA # 20754180 parentage verified/HD50K  
Sire: S Thrive 0860 AAA# 19765372

VDAR Cedar Wind 8111  
VDAR Cedar Wind 2027 VDAR PF Hyalite 5843  
Dam: S & V Top Lace Wind 0003 (3@108) ww ratio  
S & V Top Lace 8133 Sitz Top Game 561X  
VA Lace 4036#

BD	BW	WW Ratio	YW Ratio	Gain Ratio	Scrotal
4.07.24	93	105	111	109	36
CE	BW	WW	YW	Milk	Docility
-3	+3.6	+70	+118	+37	+20

Used as yearling to service our purebred cows.

## Lot 23 S & V Thrive 0860 3221

AAA # 20754181 parentage verified/HD50K  
Sire: S Thrive 0860 AAA# 19765372

VDAR Cedar Wind 8111  
VDAR Cedar Wind 2027 VDAR PF Hyalite 5843  
Dam: VA Olive Wind 0037 (3@104) ww ratio  
VA Olive OC 8164 S Open Country 4153  
VA Open Country 3082

BD	BW	WW Ratio	YW Ratio	Gain Ratio	Scrotal
4.07.24	76	105	104	105	34
CE	BW	WW	YW	Milk	Docility
+7	+0.0	+58	+104	+30	+22

## Lot 25 S & V Thrive 0860 3218

AAA # 20754182 parentage verified/HD50K  
Sire: S Thrive 0860 AAA# 19765372

Mytty Source  
VA Source 8101 VA Ember 4070  
Dam: VA Jadens Source 0060 (3@100) ww ratio  
VA OC Jade 8265 S Open Country 4153  
VA Jaden 2053

BD	BW	WW Ratio	YW Ratio	Gain Ratio	Scrotal
4.07.24	82	113	108	103	37
CE	BW	WW	YW	Milk	Docility
+6	+1.9	+70	+124	+23	+18



Lot 22 ~ S & V Thrive 3415  
(information to the left)

## Lot 26 S & V Maga 7190 3138

AAA # commercial parentage verified/HD50K  
Sire: VDAR Maga 7190 AAA# 19706012

S Summit 956  
S Summit 3525 S Gloria 0467  
Dam: VA 8060 (5@101) ww ratio  
VA Hoss 6134 Basin Payweight 107S  
VA Hoss 2061

BD	BW	WW Ratio	YW Ratio	Gain Ratio	Scrotal
3.27.24	92	114	107	100	38
CE	BW	WW	YW	Milk	Docility
na	na	na	na	na	na



# STARR & VARILEK ANGUS

## Lot 27 S & V Maga 7190 3142

AAA # 20760750 parentage verified/HD50K  
Sire: VDAR Maga 7190 AAA# 19706012

CAR Primetracker 780  
CAR Primetracker 054 CAR Miss Mikayla 8140  
Dam: VA Rito Pride 3367 (9@100) ww ratio  
VA Rito Pride 0171 BC Matrix 4132  
Varilek Pride 017

BD	BW	WW Ratio	YW Ratio	Gain Ratio	Scrotal
3.27.24	95	108	103	100	40.5
CE	BW	WW	YW	Milk	Docility
+3	+2.7	+69	+114	+17	+20

## Lot 30 S & V Maga 7190 3114

AAA # commercial parentage verified/HD50K  
Sire: VDAR Maga 7190 AAA# 19706012

VDAR Hero 1863 DFA Hero 6017  
GKAF Rosetta 102  
Dam: VA 6230 (7@103) ww ratio  
VA 8113 Woodhill Admiral 77K  
VA 4031

BD	BW	WW Ratio	YW Ratio	Gain Ratio	Scrotal
3.24.24	101	107	102	100	38.5
CE	BW	WW	YW	Milk	Docility
na	na	na	na	na	na

## Lot 28 S & V Maga 7190 3147

AAA # 20630561 parentage verified/HK50K  
Sire: VDAR Maga 7190 AAA# 19706012

GDAR Game Day 449  
Sitz Top Game 561x Sitz Pride 88T  
Dam: VA Princess 561x-6200 (7@102) ww ratio  
VA Princess C 1165 Nichols Extra K205  
VA Princess C 5126

BD	BW	WW Ratio	YW Ratio	Gain Ratio	Scrotal
3.28.24	103	113	109	107	36
CE	BW	WW	YW	Milk	Docility
+5	+2.7	+75	+135	+36	+13



Lot 30 ~ S & V Maga 3114

## Lot 29 S & V Maga 7190 3300

AAA # 20641768 parentage verified/HD50K  
Sire: VDAR Maga 7190 AAA# 19706012

Vermillion Payweight J847  
Basin Payweight 107S Basin Lucy 3829  
Dam: VA Nicky Weight 9063 (4@104) ww ratio  
VA Nicky 6068 Sitz Top Game 561x  
VA Miss Nicky 3174

BD	BW	WW Ratio	YW Ratio	Gain Ratio	Scrotal
4.16.24	90	110	101	90	35.5
CE	BW	WW	YW	Milk	Docility
+5	+3.0	+68	+117	+24	+29

## Lot 31 S & V Maga 7190 3122

AAA # 20625026 parentage verified/HD50K  
Sire: VDAR Maga 7190 AAA# 19706012

VDAR Cedar Wind 8111  
VDAR Cedar Wind 2027 VDAR PF Hyalite 5843  
Dam: VA Karina Wind 0192 (3@102) ww ratio  
VA Windy Karina 7081 VDAR Really Windy 4097  
VA Karina 1064

BD	BW	WW Ratio	YW Ratio	Gain Ratio	Scrotal
3.24.24	90	96	94	94	38.5
CE	BW	WW	YW	Milk	Docility
+4	+2.9	+66	+112	+20	+29

# STARR & VARILEK ANGUS

## Lot 32 S & V Maga 7190 3128

AAA # 20625027 parentage verified/HD50K  
Sire: VDAR Maga 7190 AAA# 19706012

DFA Hero 6017  
VDAR Hero 1863 GKAF Rosetta 102  
Dam: VA Eveline Hero 0204 (3@105) ww ratio  
VA Eveline 5146 Cole Creek Cedar Ridge IV  
VA Eveline 0360#

BD	BW	WW Ratio	YW Ratio	Gain Ratio	Scrotal
3.25.24	83	114	103	89	36
CE	BW	WW	YW	Milk	Docility
+3	+2.8	+62	+97	+26	+23

## Lot 34 S & V Maga 7190 3271

AAA # 20638570 parentage verified  
Sire: VDAR Maga 7190 AAA# 19706012

Sitz Rainmaker 6169  
Sitz Rainmaker 9723 Sitz Miss Burgess 1591  
Dam: VA Rahmee 8115 (5@100) ww ratio  
VA Pride S 4059# S Chisum 6175  
VA Pride 9102

BD	BW	WW Ratio	YW Ratio	Gain Ratio	Scrotal
4.16.24	90	110	101	90	37
CE	BW	WW	YW	Milk	Docility
+4	+2.8	+69	+121	+18	+22

## Lot 33 S & V Maga 7190 3192

AAA # 20635105 parentage verified/HK50K  
Sire: VDAR Maga 7190 AAA# 19706012

Sitz Rainmaker 6169  
Sitz Rainmaker 9723 Sitz Miss Burgess 1591  
Dam: VA Mya 3113 (10@100) ww ratio  
VA Lonely Princess 3081 SAF Focus of ER  
VA Lonely Princess 030

BD	BW	WW Ratio	YW Ratio	Gain Ratio	Scrotal
4.03.24	95	104	101	99	40
CE	BW	WW	YW	Milk	Docility
+2	+4.5	+78	+127	+18	+26

## Lot 35 S & V Rainmaker 3305

AAA # commercial parentage verified/HD50K  
Sire: S & V Rainmaker 4044-1191 AAA# 20169074

WCC Special Design L309  
HARB In Style 965JH HARB Black Lady 073jh  
Dam: VA 4054 (9@104) ww ratio  
VA 2143 CAR Primetracker 054  
VA 0018

BD	BW	WW Ratio	YW Ratio	Gain Ratio	Scrotal
4.17.24	83	100	98	97	34
CE	BW	WW	YW	Milk	Docility
na	na	na	na	na	na



Lot 33 ~ S & V Maga 3192



Lot 35 ~ S & V Rainmaker 3305

# STARR & VARILEK ANGUS

## Lot 36 S & V Rainmaker 3126

AAA # 20625029 parentage verified/HK50K  
Sire: S & V Rainmaker 4044-1191 AAA# 20169074

Cole Creek Black Cedar 46p  
Cole Creek Cedar Ridge IV Cole Creek Clovanada 49S

Dam: VA Olive 3082 (10@95) ww ratio  
VA Queen 8210 HARB In Style 965JH  
Varilek Queen 270

BD	BW	WW Ratio	YW Ratio	Gain Ratio	Scrotal
3.25.24	89	103	89	72	35.5
CE	BW	WW	YW	Milk	Docility
+4	+1.1	+59	+90	+32	+3

## Lot 38 S & V Coalition 3371

AAA # 20762121 parentage verified/HD50K  
Sire: S & V U2 Coalition 1192 AAA# 20157397

HA Open Country 2047  
S Open Country 4153 S Gloria 1205

Dam: VA Open Country 4153-9133 (4@96) ww ratio  
VA Sandy 3010 Lemar Final Answer 24y  
VA Sandy 1015

BD	BW	WW Ratio	YW Ratio	Gain Ratio	Scrotal
4.27.24	83	108	105	104	35.2
CE	BW	WW	YW	Milk	Docility
+3	+4.1	+78	+144	+24	+20

## Lot 37 S & V Rainmaker 3193

AAA # 20754188 parentage verified/HD50K  
Sire: S & V Rainmaker 4044-1191 AAA# 20169074

Sitz Top Game 561x  
VA Top Game 561x-7086 VA Taryn 1233

Dam: S & V Lucy Game 9312 (4@107) ww ratio  
VA Lucy 4028# CAR Primetracker 054  
VA Lucy 2011#

BD	BW	WW Ratio	YW Ratio	Gain Ratio	Scrotal
4.02.24	101	113	115	120	38.5
CE	BW	WW	YW	Milk	Docility
+4	+2.8	+75	+133	+35	+3



Lot 38 ~ S & V Coalition 3371



Lot 37 ~ S & V Rainmaker 3193

## Lot 39 S & V Coalition 3304

AAA # 20754186 parentage verified  
Sire: S & V U2 Coalition 1192 AAA# 20157397

Rito 707 Ideal 3407 7075  
SAV Renown 3439 SAV Blackcap May 4136

Dam: VA Charlotte's Renown 9128 (4@97) ww ratio  
VA Charlotte 4017 CAR Primetracker 054  
VA Charlotte 2096#

BD	BW	WW Ratio	YW Ratio	Gain Ratio	Scrotal
4.17.24	92	92	92	96	33.5
CE	BW	WW	YW	Milk	Docility
+4	+2.2	+56	+104	+26	+19



# STARR & VARILEK ANGUS

## Lot 40 S & V Top Game 3123

AAA # 20946025 parentage verified/HD50K  
Sire: VA Top Game 561x-7087 AAA# 19076924

Baldrige Kaboom K243KCF  
Connealy Thunder Parker of Conanga 241

Dam: VA Erica 8015 (5@106) ww ratio

VA Lone Summit 6015 S Summit 3525  
VA Lone Blk 4112

BD	BW	WW Ratio	YW Ratio	Gain Ratio	Scrotal
3.24.24	86	98	103	114	40
CE	BW	WW	YW	Milk	Docility
+11	+2.0	+68	+133	+23	+23

## Lot 43 S & V Top Game 3294

AAA # 20762122 parentage verified/HD50K  
Sire: VA Top Game 561x-7087 AAA# 19076924

HA Open Country 2047

S Open Country 4153 S Gloria1205

Dam: VA OC Nicky 7070 (6@91) ww ratio

VA Miss Nicky 1085 338 Right Time 6125  
VA Miss Nicky 8091

BD	BW	WW Ratio	YW Ratio	Gain Ratio	Scrotal
4.15.24	83	96	98	106	40
CE	BW	WW	YW	Milk	Docility
+5	+2.2	+59	+113	+31	+27

## Lot 41 S & V Top Game 3119

AAA # 20625030 parentage verified/HK50K  
Sire: VA Top Game 561x-7087 AAA# 19076924

AAR Really Windy 1205

VDAR Really Windy 4097 VDAR Blackbird 2031

Dam: VA Sandy 4104 (9@95) ww ratio

VA Sandy 1015 VA Rainmaker 9414  
VA Queen T9227

BD	BW	WW Ratio	YW Ratio	Gain Ratio	Scrotal
3.24.24	81	105	98	90	39.5
CE	BW	WW	YW	Milk	Docility
+8	+3.3	+66	+119	+26	+21

## Lot 44 S & V Barricade 3151

AAA # 20793685 parentage verified/HD50K  
Sire: Sitz Barricade 632F AAA# 19078148

AAR Really Windy 1205

VDAR Really Windy 4097 VDAR Blackbird 2031

Dam: VA Windy Lucy 5177 (8@102) ww ratio

VA Lucy 0131 Nichols Extra K205  
VA Lucy 4035

BD	BW	WW Ratio	YW Ratio	Gain Ratio	Scrotal
3.29.24	89	97	94	94	39
CE	BW	WW	YW	Milk	Docility
+6	+1.0	+65	+108	+20	+17

## Lot 42 S & V Top Game 3150

AAA # 20793283 parentage verified/HD50K  
Sire: VA Top Game 561x-7087 AAA# 19076924

Vermillion Payweight J847

Basin Payweight 107S Basin Lucy 3829

Dam: S & V Payweight Pride 9117 (4@105) ww ratio

VA Jus Pride 4188# CAR Justice 0105  
VA Pride 9167

BD	BW	WW Ratio	YW Ratio	Gain Ratio	Scrotal
3.28.24	86	102	100	100	35.5
CE	BW	WW	YW	Milk	Docility
+10	+1.7	+56	+104	+20	+15



Lot 44 ~ S & V Barricade 3151

# STARR & VARILEK ANGUS

## Lot 45 S & V Barricade 3152

AAA # 20761813 parentage verified/HD50K  
Sire: Sitz Barricade 632F AAA# 19078148

CAR Justice 0105  
VA Justice 0105-3253 VA Pride 9064  
Dam: VA Lucy's Justice 6075 (7@101) ww ratio  
VA Lucy 3112 Lemar Final Answer 24y  
VA Lucy 0131

BD	BW	WW Ratio	YW Ratio	Gain Ratio	Scrotal
3.29.24	93	112	107	103	37
CE	BW	WW	YW	Milk	Docility
+8	+2.0	+91	+159	+28	+17

Used as yearling to service our purebred cows.



Lot 45 ~ S & V Barricade 3152

## Lot 47 S & V Stellar 726D-3049

AAA # 20763158 parentage verified/HD50K  
Sire: Sitz Stellar 726D AAA# 18397542

MAR Innovation 251  
VA Innovation251-9179 VA Penny 5105  
Dam: S & V Margie 1260 (2@92) ww ratio  
VA Margaret 8071 VA Summit 3525-6002  
VA Margaret 6112

BD	BW	WW Ratio	YW Ratio	Gain Ratio	Scrotal
3.05.24	68	92	90	89	36
CE	BW	WW	YW	Milk	Docility
+11	-0.4	+64	+110	+22	+1

## Lot 48 S & V Stellar 726D-3039

AAA # 20633623 parentage verified  
Sire: Sitz Stellar 726D AAA# 18397542

HF Syndicate 213Z  
U-2 Coalition 206C U2 Erelite 109Z  
Dam: S & V Lucy Coalition 1056 (2@90) ww ratio  
VA Lucy 8109 S Summit 3525  
VA Windy Lucy 5177

BD	BW	WW Ratio	YW Ratio	Gain Ratio	Scrotal
3.03.24	76	90	90	89	
CE	BW	WW	YW	Milk	Docility
+9	-0.7	+45	+88	+21	+24



Lot 46 ~ S & V Stellar 3079

## Lot 46 S & V Stellar 726D-3079

AAA # 20763504 parentage verified/HK50K  
Sire: Sitz Stellar 726D AAA# 18397542

Sitz Rainmaker 6169  
Sitz Rainmaker 9723 Sitz Miss Burgess 1591  
Dam: VA Penny 5105 (8@106) ww ratio  
VA Penny 1109# Nichols Extra K205  
VA Penny 4131

BD	BW	WW Ratio	YW Ratio	Gain Ratio	Scrotal
3.14.24	75	111	106	102	39
CE	BW	WW	YW	Milk	Docility
+5	+1.4	+84	+147	+10	+12

Used as yearling to service our purebred cows.

# STARR & VARILEK ANGUS

## Lot 49 S & V Coalition 3136

AAA # 20754176 parentage verified/HD50K  
Sire: S & V U2 Coalition 1156 AAA# 20157398

MAR Innovation 251  
VA Innovation251-9179 VA Penny 5105  
Dam: S & V Lace Innovation 1406 (2@103) ww ratio  
S & V Top Lace 8133 Sitz Top Game 561x  
VA Lace 4036#

BD	BW	WW Ratio	YW Ratio	Gain Ratio	Scrotal
3.26.24	86	102	102	106	38
CE	BW	WW	YW	Milk	Docility
+11	+0.2	+64	+106	+28	+16

## Lot 52 S & V Gallatin 3209

AAA # 20754179 parentage verified/HD50K  
Sire: S & V Gallatin 7586-9162 AAA# 20286571

MAR Innovation 251  
VA Innovation251-9179 VA Penny 5105  
Dam: S & V Nicky Innovation 1124 (2@98) ww ratio  
VA Nicky 8023 S Summit 3525  
VA Nicky 6137

BD	BW	WW Ratio	YW Ratio	Gain Ratio	Scrotal
4.04.24	75	95	97	104	33
CE	BW	WW	YW	Milk	Docility
+10	+0.6	+58	+93	+33	+22

## Lot 50 S & V Coalition 3148

AAA # 20936305 parentage verified  
Sire: S & V U2 Coalition 1156 AAA# 20157398

VDAR Sonny Boy 1194  
VDAR Gallatin 7586 VDAR Lass 2525  
Dam: S & V Gallatin's Elba 1006 (2@107) ww ratio  
VA Elba Wind 9248 VDAR Cedar Wind 2027  
VA Elba Day 1148

BD	BW	WW Ratio	YW Ratio	Gain Ratio	Scrotal
3.28.24	79	84	87	94	35.5
CE	BW	WW	YW	Milk	Docility
+11	-0.1	+43	+84	+28	+

## Lot 53 S & V Gallatin 3272

AAA # 20760749 parentage verified/HD50K  
Sire: S & V Gallatin 7586-9162 AAA# 20286571

DFA Hero 6017  
VDAR Hero 1863 GKAF Rosetta 102  
Dam: VA Taryn's Hero 1075 (2@103) ww ratio  
VA Taryn 3216 CAR Primetracker 054  
VA Taryn 1233

BD	BW	WW Ratio	YW Ratio	Gain Ratio	Scrotal
4.13.24	85	101	91	78	32.5
CE	BW	WW	YW	Milk	Docility
+7	+1.0	+57	+92	+28	+33

## Lot 51 S & V Gallatin 3159

AAA #20754174 parentage verified  
Sire: S & V Gallatin 7586-9162 AAA# 20286571

Sitz Top Game 561x  
VA Top Game 561X-7087 VA Queen 1084  
Dam: S & V Gamey Lucy 1293 (2@98) ww ratio  
VA Lucy 4028# CAR Primetracker 054  
VA Lucy 2011#

BD	BW	WW Ratio	YW Ratio	Gain Ratio	Scrotal
3.30.24	79	87	90	96	34
CE	BW	WW	YW	Milk	Docility
+8	+1.5	+49	+88	+31	+23



Lot 51 ~ S & V Gallatin 3159



# STARR & VARILEK ANGUS

## Lot 54 S & V Cedar Wind 3214

AAA # commercial parentage verified/HD50K  
Sire: VDAR PF Cedar Wind 2027 AAA# 18820779

Sitz Top Game 561x  
VA Top Game 561x-7087 VA Queen 1084  
Dam: VA 9164 (4@106) ww ratio  
VA 2901 Nugget of Par  
VA 4031

BD	BW	WW Ratio	YW Ratio	Gain Ratio	Scrotal
4.06.24	93	116	102	85	38.5
CE	BW	WW	YW	Milk	Docility
na	na	na	na	na	na

## Lot 56 S & V Trapper 1070-3352

AAA # 20754189 parentage verified/HD50K  
Sire: S & V Trapper 1070 AAA# 20157410

VDAR Cedar Wind 8111  
VDAR PF Cedar Wind 2027 VDAR PF Hyalite5843  
Dam: VA Erica Wind 0010 (2@101) ww ratio  
VA Erica 8015 Connealy Thunder  
VA Lone Summit 6015

BD	BW	WW Ratio	YW Ratio	Gain Ratio	Scrotal
4.24.24	84	104	98	99	36.75
CE	BW	WW	YW	Milk	Docility
-1	+3.6	+80	+140	+29	+24

## Lot 55 S & V Trapper 1070-3252

AAA #20976069 parentage verified/HD50K  
Sire: S & V Trapper 1070 AAA# 20157410

Connealy Impression  
MAR Innovation 251 MAR Final Kahuna 856  
Dam: S & V Inn Eveline 0144 (3@110) ww ratio  
VA Eveline 5093 HARB In Style 965JH  
VA Eveline 2137

BD	BW	WW Ratio	YW Ratio	Gain Ratio	Scrotal
4.11.24	84	119	106	90	37
CE	BW	WW	YW	Milk	Docility
-1	+3.8	+84	+144	+29	+24



Lot 56 ~ S & V Trapper 3352

## Lot 57 S & V Rainmaker 3076

AAA # 20763165 parentage verified  
Sire: Basin Rainmaker 4044 AAA# 17913751

Basin Payweight 107s  
VA Payweight 107s-9151 VA Channel 3145  
Dam: S & V Prides Weight 1159 (2@88) ww ratio  
VA Jus 4188# CAR Justice 0105  
VA Pride 9167

BD	BW	WW Ratio	YW Ratio	Gain Ratio	Scrotal
3.12.24	106	86	100	122	32
CE	BW	WW	YW	Milk	Docility
-4	+5.5	+64	+123	+26	+



Lot 55 ~ S & V Trapper 3252

# STARR & VARILEK ANGUS

## Lot 58 S & V Rainmaker 3065

AAA # 20763164 parentage verified  
Sire: Basin Rainmaker 4044 AAA# 17913751

HF Syndicate 213Z  
U-2 Coalition 206C U2 Erelite 109Z  
Dam: S & V Tayla Coalition 1139 (2@93) ww ratio  
VA Tayla 4169 VA In Style 2085  
VA Tayla 9194

BD	BW	WW Ratio	YW Ratio	Gain Ratio	Scrotal
3.07.24	83	87	91	100	33
CE	BW	WW	YW	Milk	Docility
+7	+1.5	+49	+91	+30	+

## Lot 60 S & V In Style 3072

AAA #20633624 parentage verified  
Sire: HARB In Style 965JH AAA# 15244182

Connealy Earnan 076E  
Ellingson Roughrider 4202 EA Blackclass 8914  
Dam: S & V Margaret Rider 1163 (2@97) ww ratio  
VA Margaret 6112 VDAR Really Windy 4097  
VA Margaret 8217

BD	BW	WW Ratio	YW Ratio	Gain Ratio	Scrotal
3.10.24	75	83	89	90	37
CE	BW	WW	YW	Milk	Docility
+7	+0.7	+46	+83	+27	+20

## Lot 59 S & V Rainmaker 3070

AAA # 20754178 parentage verified/HD50K  
Sire: S & V Rainmaker 4044-1099 AAA# 20166405

VDAR Sonny Boy 1194  
VDAR Gallatin 7586 VDAR Lass 2525  
Dam: S & V Nicky Gallatin 1014 (2@97) ww ratio  
VA Cedar Nicky 9004 VDAR Cedar Wind 2027  
VA Nicky Resource 7060

BD	BW	WW Ratio	YW Ratio	Gain Ratio	Scrotal
3.10.24	91	96	105	122	35.5
CE	BW	WW	YW	Milk	Docility
+6	+3.3	+76	+138	+27	+24



Lot 59 ~ S & V Rainmaker 3070

## CATTLE USA Instructions

- 1) Log in to Cattle USA site. [www.cattleusa.com](http://www.cattleusa.com)
- 2) Push the **Submit** button next to Platte Livestock. The first time you do this, a form will pop-up for you to fill out your contact information. Fill out your info then push the button at the bottom of the form to continue.
- 3) You have now sent your information to Platte Livestock. The auction will now be able to find you in their database and approve you to buy. Your information will be forwarded to Platte Livestock only. **If you have already been approved previously to buy at Platte Livestock, you will be able to bid at the Starr & Varilek Angus sale.**

Contact Platte Livestock 1-800-337-2655 or Tess Starr 605-680-1865 for assistance

Videos can be viewed @  
[thelivestocklink.com](http://thelivestocklink.com)

or go directly to our website and we will link you to the webpage featuring the videos.

[www.starrandvarilekangus.com](http://www.starrandvarilekangus.com)